

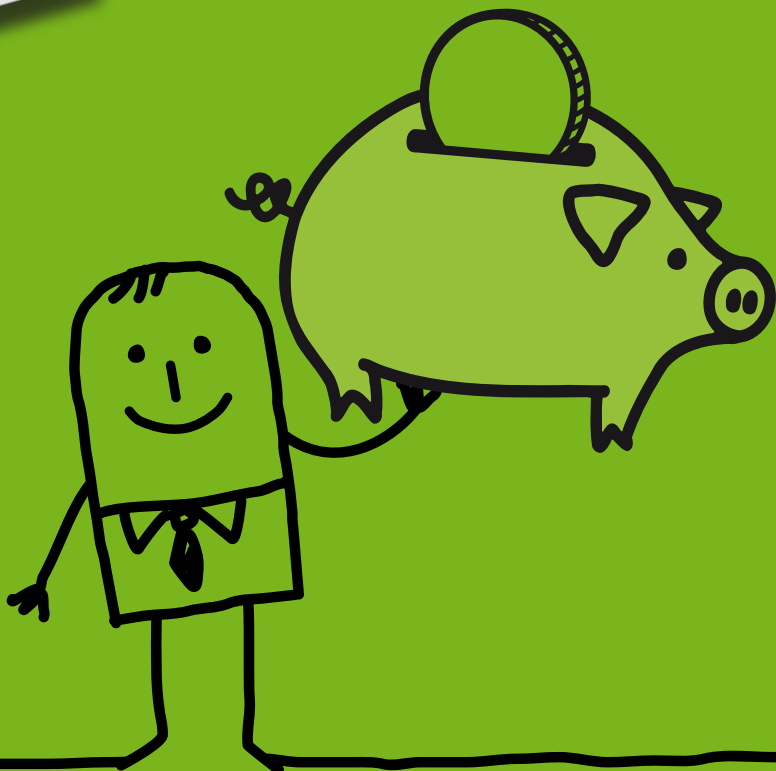
Benefit Changes

ARE YOU PREPARED?

5. Council Tax Benefit



The Government is making big changes to welfare benefits. **Find out how the changes affect you.**



Council Tax Benefit

Is available for people on low incomes who need help to pay their Council Tax. The Government is abolishing the national Council Tax Benefit scheme which will be replaced by a local scheme of Council Tax Support.

Council Tax Support

Will be a local scheme run by the Council. The Council will have 10 percent less money to help people pay their Council Tax and difficult decisions will have to be made. The Council is designing a new scheme and will consult people about the proposals later this year.

Support for Pensioners

Pensioners who are currently entitled to Council Tax Benefit will not be affected by the change. If you are a pensioner aged 61 or over who receives Council Tax Benefit, you will continue to receive the same level of support.

Question

How will Council Tax Support change?

Answer

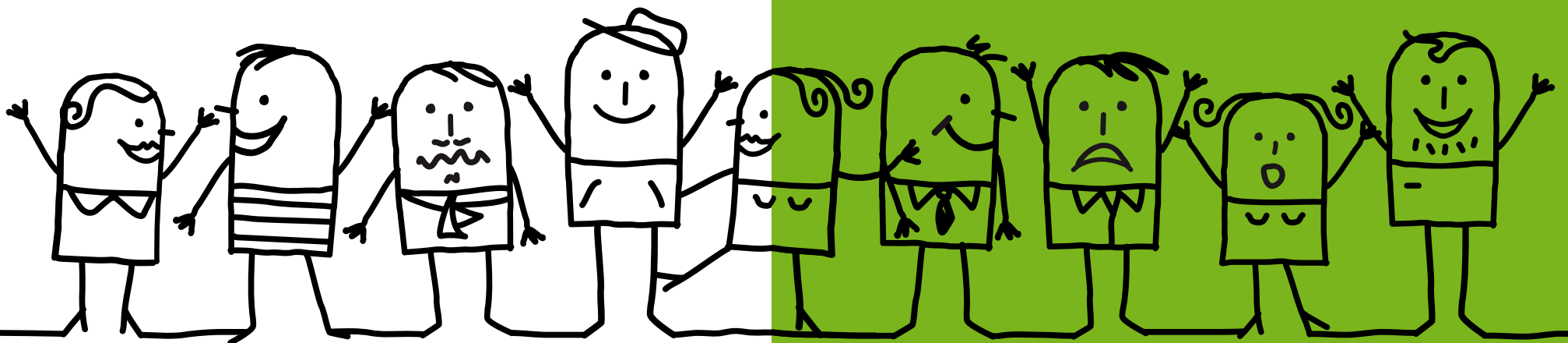
- We will need to decide who should be supported to help pay their Council Tax depending on their circumstances and how much benefit they should get.
- Some people aged 18-60 are likely to be affected and some could receive less help to pay their Council Tax.
- Until the Council has consulted on and decided a new scheme, we cannot give details of how it will affect anyone of working age.

Question

When will the changes happen?

Answer

The Government has decided that the local Council Tax Support scheme will apply from 1st April 2013.



For more information about the changes affecting Council Tax Benefit visit: www.rotherham.gov.uk/counciltaxsupport

Who can I talk to about the benefit changes?

DWP Helpline:..... **0845 6057 064**

Citizens Advice Bureau:..... **0844 4111 444**
(landline)

0300 3300 650
(mobile)

Housing and Council Tax Benefit:..... **01709 336065**

