

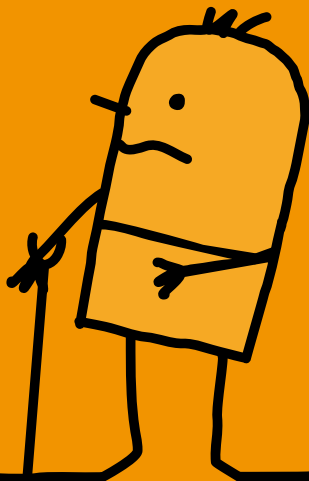
# Benefit Changes

ARE YOU PREPARED?

## 7. Disability Living Allowance



The Government is making big changes to welfare benefits. **Find out how the changes affect you.**



Disability Living Allowance is changing to Personal Independence Payment

**Personal Independence Payment (PIP)** is a new benefit to help disabled people live full, active and independent lives. Disabled people aged 16 - 64 who are entitled to the benefit will get money to help them pay the extra costs of being disabled.

**Some things will stay the same.**

- People must have a long-term disability or health condition to get Personal Independence Payment.
- Personal Independence Payment is money that people can spend in any way they choose.

## Question

How will Personal Independence Payment be calculated?

## Answer

- There will be a Daily Living part and a Mobility part. Your money will be made up of one or both of these parts.
- Each part will be made up of 2 rates – standard and enhanced. The Government has not yet decided how much these rates will be.

## Question

When will the changes happen?

## Answer

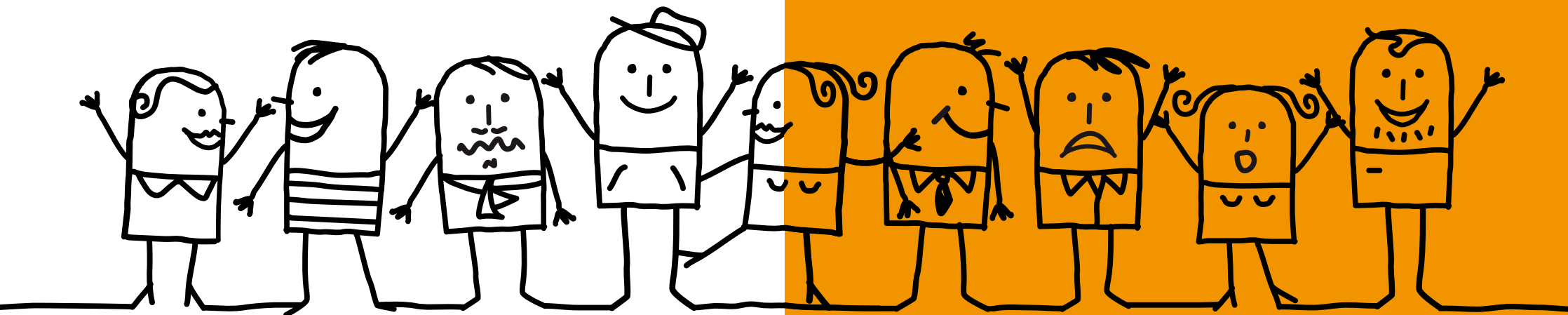
- The Government have decided to change Disability Living Allowance to Personal Independence Payment from April 2013.
- Personal Independence Payment will be introduced to the country in stages.
- The Government will ask everyone to make new claims for Personal Independence Payment by March 2016.

## Question

Is everyone entitled to the Personal Independence Payment?

## Answer

No. Everyone will have to make a new claim when asked to (unless they are terminally ill).



# Who can I talk to about the benefit changes?

**DWP Helpline:**..... **0845 6057 064**

**Citizens Advice Bureau:**..... **0844 4111 444**

(landline)

**0300 3300 650**

(mobile)

**Housing and Council Tax Benefit:**..... **01709 336065**

